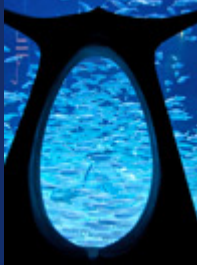


THE LOST CHAMBERS INFORMATION



THE ENTRY PORTAL

In front of you is the Entry portal into the City of Atlantis. Guarding this gate are schools of Indian mackerel. They swim rapidly in a spiral. This is their defensive mechanism so smaller mackerels seem larger to potential predators.



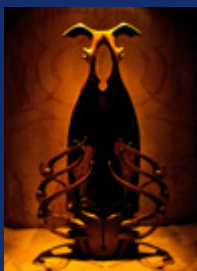
NAVIGATION ROOM

This is the arrival and departure point for dignitaries visiting Atlantis from other parts of the globe. A tile mural portrays the range of Atlantean civilization alongside evidence that ancient Atlanteans had mastered flight.



KNOWLEDGE ROOM

The Knowledge Room is where the sages would come to discuss issues and solve problems. In their place you see varieties of exotic sea life, including moon jellies and florescent coral.



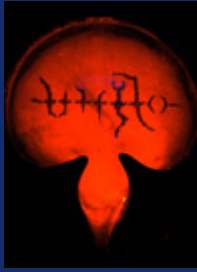
ABYSS ROOM

Under the direction of the sage versed in engineering, the Abyss Room is the gateway to a mineshaft from which Atlanteans excavated natural resources. There are giant cuttlefish in the abandoned miners' tool rack.



LOBSTER CRAWL

Entering an ancient refining chute with filtering grills previously used to separate ore, guests are surrounded by lobsters in pools that have filled the chute over time.



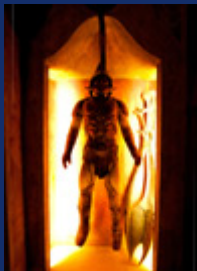
RED SAGE CHAMBER

Students of the stars, the Atlanteans used this observatory to examine the night sky above Atlantis. This is the first view into the Ambassador Lagoon, showcasing the abundant and rich marine life of the UAE in 11 million liters of water.



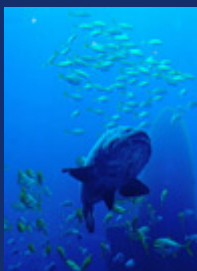
SEVEN SAGES CHAMBER

This is the council chamber where the 'Seven Sages' of Sumerian legend would convene. A ritualistic arrangement of processional pathways, seating and presentation mechanisms offers more opportunities to see the wealth of sea life in Ambassador Lagoon.



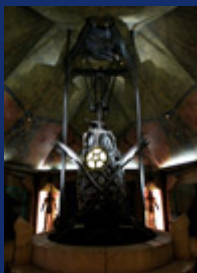
BLUE SAGE CHAMBER

The Blue Sage Chamber is where the Atlanteans held martial arts training. Here you'll see fearsome piranha.



WORKSHOP

The Workshop is where Atlanteans would create devices from the metal mined below the Abyss Room, the tanks here are home to exotic fish such as huge giant groupers and beautiful lionfish.



GENERATOR ROOM

The Generator Room, with its ancient dynamo, is the facility that produces power for the City of Atlantis. Brightly colored live coral grows amidst rubble and ancient Atlantean artifacts.



AMBASSADOR LAGOON

11 million liters of water ten meters deep is filled with several large manta rays, sun fish, groupers and a large variety of smaller animals all found within the local waters of the Arabian Gulf.